

Operating Instructions

Series D9000 Spring Driven Hose Reels

Low Pressure Model Numbers:

D9200 OLP	D9300 OLP	D9350 OLP	D9430 OLP
D9275 OLP	D9330 OLP	D9375 OLP	D9450 OLP
D9299 OLP	D9340 OLP	D9400 OLP	



Dimensions

	A	26 1/4"
	B	24 1/8"
	C	4 3/4"
	D	12"
	E	7 3/4"
	F	22 1/4"
	G	12 1/4"
	H	13 7/8"
	J	26 3/8"

Four 7/16" diameter mounting holes

SAFETY

1. Models designed for fuel are coded with the prefix "F" i.e., "FD9400 OLP." Check name plate on the reel before installing.
2. Do not use reel at higher pressures or temperatures than listed on the back of this bulletin.
3. Remove all spring tension before beginning disassembly process.
4. Reel spring motor case is permanently sealed. Any attempt to remove the spring motor may cause serious injury.

INSTALLATION:

The swivel union is packed separately in the reel carton, use teflon tape to assure a satisfactory seal. A flexible hose connection must be used between the hose reel inlet and the source of supply to prevent possible misalignment and binding. Non flexible connections will void the warranty, pressure rating of inlet hose must be equal to or more than the pressure rating of the reel. Consult factory for proper spring when installing reels above 16 ft.

LUBRICATION:

Hose reel spring and bearings are factory lubricated and require no further lubrication.

REPLACING HOSE:

1. Wind spool flange clockwise-facing swivel-until spring is tight.
2. Back off three turns and latch.
3. Insert hose through roller guide.
4. Connect hose fitting to female outlet ell.

ADJUSTMENTS:

To adjust spring tension, add or remove wraps of hose from the spool, one wrap at a time until desired tension is obtained.

REPAIRS:

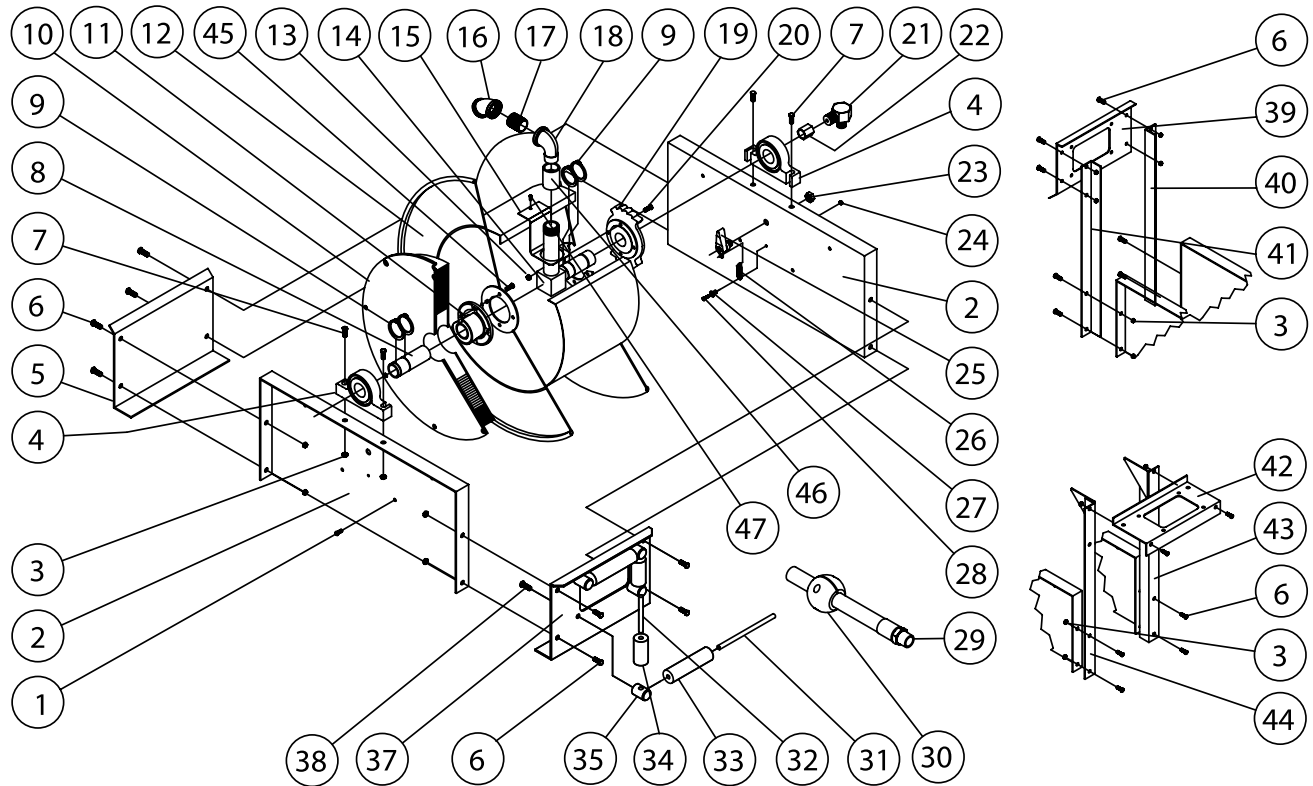
Extensive repairs should be performed only by an authorized serviceman or factory to avoid damage which may void your warranty. Remove all spring tension before beginning disassembly process.

MODIFICATION:

Hose latching mechanism can be removed for constant tension applications.

Form# 496-285 Rev: 1/2011

Series D9000 Spring Driven Hose Reels



Item #	Part #	# Req	Description	Item #	Part #	# Req	Description	Item #	Part #	# Req	Description
1	S2-41	4	1/4-20 x 1/2" hex screw	15	270029	1	Hose outlet support	35	S270014	4	Guide roller post
2	270009	2	Side frame	19	S270001	1	Latch ratchet hub	37	270011	1	Hose guide roller plate
3	S281-6	12	3/8-16 hex flange nut	20	S2-42	4	1/4-20 x 5/8" hex screw	38	S2-51	4	5/16-18 x 1/2" hex screw
4	S270058	2	Pillow block	23	S280-8	1	1/2-20 hex flange nut	39	270045	1	Guide roller plate SW
5	270012	1	End frame support	24	S82-15	1	10-32 x 3/8" nyloc nut	40	270043	1	SW support bracket
6	S44-2	8	3/8-16 x 5/8" mach. screw	25	S600568	1	Latch pawl assembly	41	270042	1	SW support bracket
7	S44-8	4	3/8-16 x 1 3/4" screw	26	S260067	1	Latch spring	42	270044	1	Guide roller plate TW
8	270060	1	Support shaft	27	S400012	2	Latch bushing	43	270041	1	TW support bracket
9	S140-31	6	Snap ring	28	S20-110	1	10-32 x 7/8" screw	44	270040	1	TW support bracket
10	S270105	1	Spring & case assembly	31	S270016	2	Guide roller pin - long	45	S328-29	4	Self tapping screw
11	S270002	1	Spring arbor	32	S270015	2	Guide roller pin - short	47	S32-136	1	#10 x 3/8" self tap screw
13	S281-4	8	1/4-20 hex flange nut	33	262436-5.468	2	Guide roller				
14	S270054	1	1" Inlet tube	34	262436-2.968	2	Guide roller				

Item #	Description	# Req	D9200 OLP	D9275 OLP	D9299 OLP	D9300 OLP	D9330 OLP	D9340 OLP	D9350 OLP	D9375 OLP	D9400 OLP	D9430 OLP	D9450 OLP
12	Sheave assembly	1	270107	270107	270107	270107	270107	270107	270107	270107	270106	270106	270106
16	45° Elbow	1	None	None	None	None	None	None	None	None	262452	262452	262452
17	Bushing	1	300080	300080	300080	270025	270025	270025	270025	270025	None	None	None
18	90° Elbow	1	270028	270028	270028	270028	270028	270028	270028	270028	262451	262451	262451
21	Swivel assembly	1	600888	600888	600888	602026	602026	602026	602026	602026	600682-1	600682-1	600682-1
22	Coupling reducer	1	S289-5	S289-5	S289-5	S289-6	S289-6	S289-6	S289-6	S289-6	None	None	None
29	Hose assembly	1	None	601020-75	601020-100	None	601026-30	601026-40	601026-50	601026-75	None	601027-30	601027-50
30	Hose bumper/assembly	1	None	2-HR1005	2-HR1005	None	3-HR1005	3-HR1005	3-HR1005	3-HR1005	None	4-HR1005	4-HR1005
46	Coupling	1	None	None	None	None	None	None	None	None	262453	262453	262453
--	Hose ID and length	--	None	1/2" x 75'	1/2" x 100'	None	3/4" x 30'	3/4" x 40'	3/4" x 50'	3/4" x 75'	None	1" x 30'	1" x 50'
--	Working pressure	--	500 PSI	300 PSI	300 PSI	500 PSI	250 PSI	250 PSI	250 PSI	250 PSI	500 PSI	250 PSI	250 PSI
--	Max. temperature	--	210° F	150° F	150° F	210° F	150° F	150° F	150° F	150° F	210° F	150° F	150° F